



NEWLANDS

TADWORTH

10 NEWLANDS

THE AVENUE, TADWORTH, KT20 5ED



2/3 RECEPTION ROOMS



KITCHEN



2/3 BEDROOMS



2 BATHROOMS

APPROX 1481.78 FT² | 137.66 M² EPC RATING: B COUNCIL TAX BAND: F

A beautifully presented and exceptionally spacious penthouse apartment located on the second floor of this prestigious modern development in the centre of Tadworth Village.

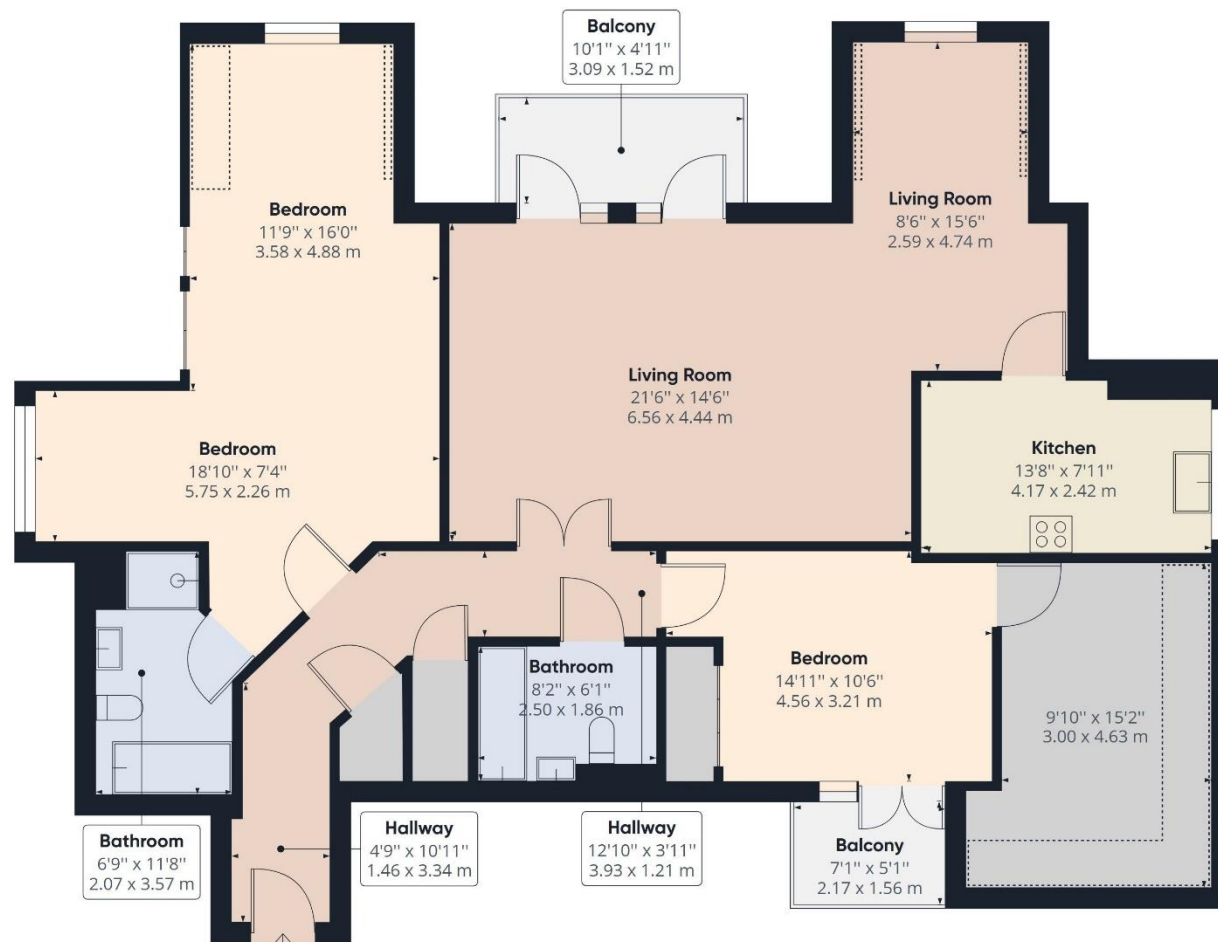
This lovely property has the benefit of lift access and features a spacious entrance hall with two storage cupboards, a large L shaped living room with separate lounge and dining areas and a roof terrace with far reaching views towards Epsom Downs and the London skyline, and a well equipped kitchen with integrated appliances. The main bedroom is also L shaped being dual aspect with a seating area and an en-suite bathroom. A second double bedroom has access to a roof terrace and a bonus room that could be used as a third bedroom or a study. A modern bathroom completes the accommodation.

Outside, Newlands enjoys lovely well maintained communal areas including pretty gardens with private and visitor parking areas with each apartment having the benefit of a private garage.

The village shops and services are very close by including Tadworth station and bus services to the local towns of Epsom and Reigate. The area is surrounded by countryside with both Epsom Downs and Walton Heath being within a 10 minute walk.

GUIDE PRICE: **£625,000**







WALTON ON THE HILL OFFICE 61 Walton Street, Walton-on-the-Hill, Surrey KT20 7RZ
01737 814877



IMPORTANT We would inform prospective purchasers that these sales particulars have been prepared as a general guide only. A detailed survey has not been carried out, nor the services, appliances and fittings tested. Room sizes should not be relied upon for furnishing purposes and are approximate. If floor plans are included, they are for guidance only and illustration purposes only and may not be to scale. If there are any important matters likely to affect your decision to buy, please contact us before viewing the property.

michael-everett.co.uk